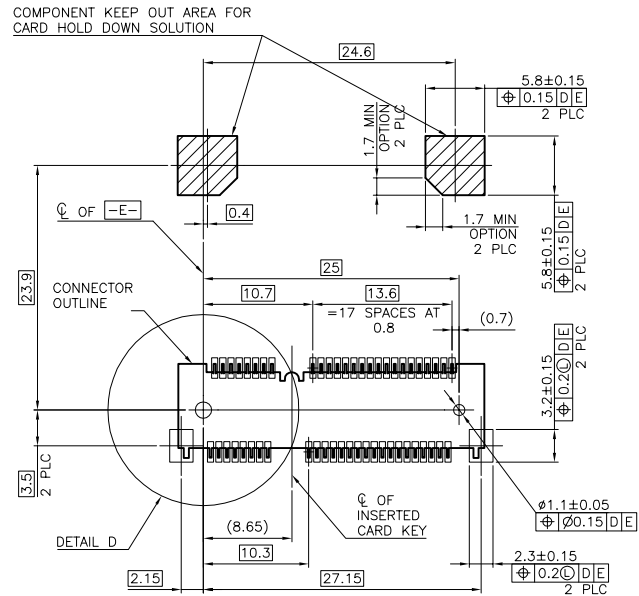
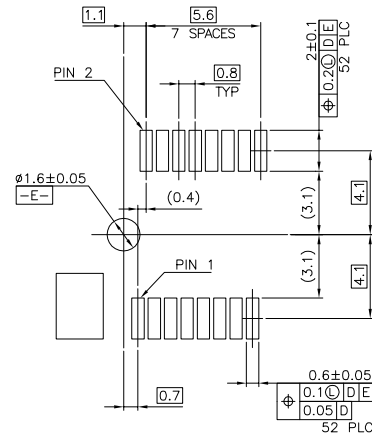


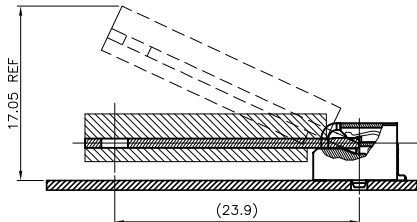
mat'l. code	-	surface	✓	tolerance	ASME_Y14.5	projection	product family	PCI_EXPRESS
ltr	ecn no	dr	date	tolerances unless otherwise specified		MM	title	MINI_PCI_EXPRESS
2	--	ZH	2019/2/26	angles	Line	scale N/A	5.6MM_HEIGHT	
				±2'				
				dr	WINSTON_ZHU	2020-05-12	dwg no	10150900
				engr	ZHENHUA_LIU	2020-05-12	sheet 1 of 5	A4
				chr			size	
				appd	HEAVEN_CEN	2020-05-12	type	CUSTOMER Drawing
sheet index	revision sheet	A						



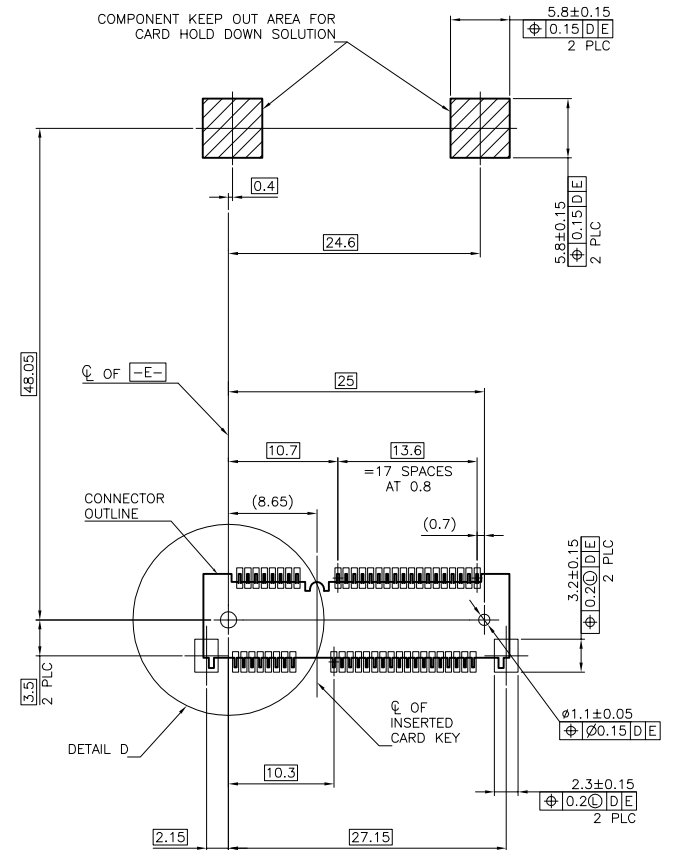
—D— IS THE TOP SURFACE OF PCB.
**RECOMMENDED P.C. BOARD PATTERN LAYOUT
FOR HALF CARD CONNECTOR
(TOP VIEW)**



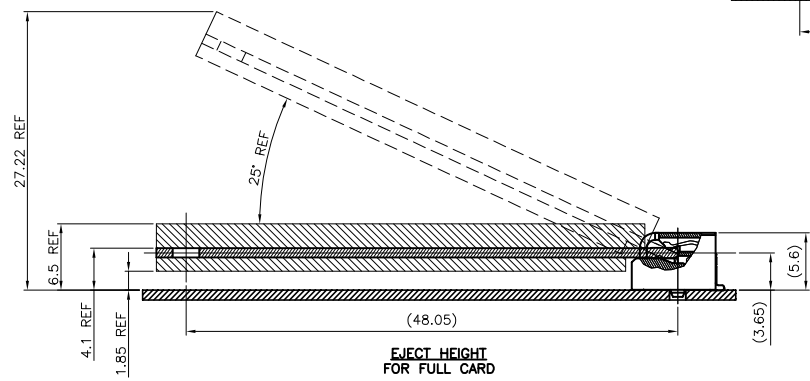
**DETAIL D
SCALE 2:1**



**EJECT HEIGHT
FOR HALF CARD**

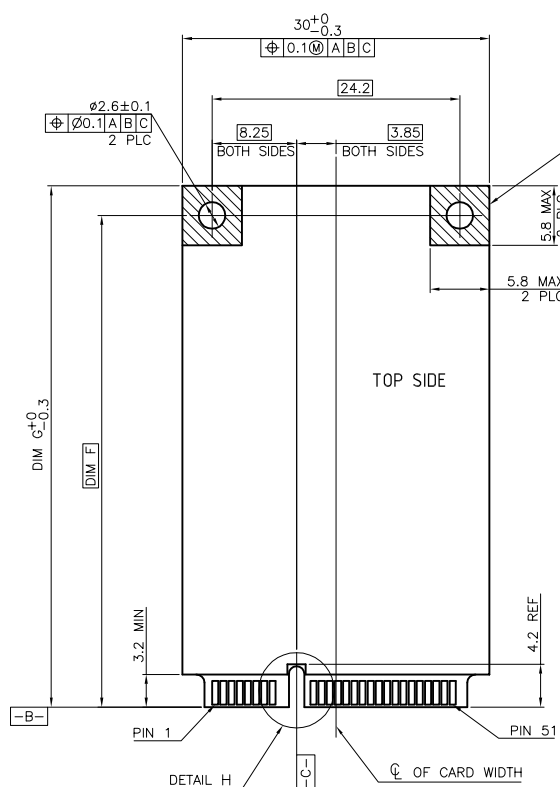


—D— IS THE TOP SURFACE OF PCB.
**RECOMMENDED P.C. BOARD PATTERN LAYOUT
FOR FULL CARD CONNECTOR
(TOP VIEW)**

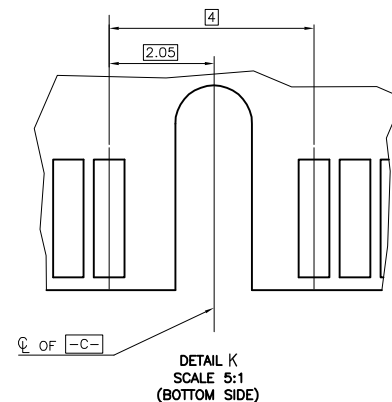
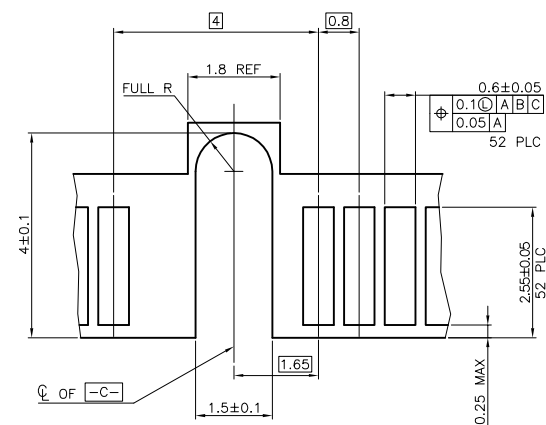
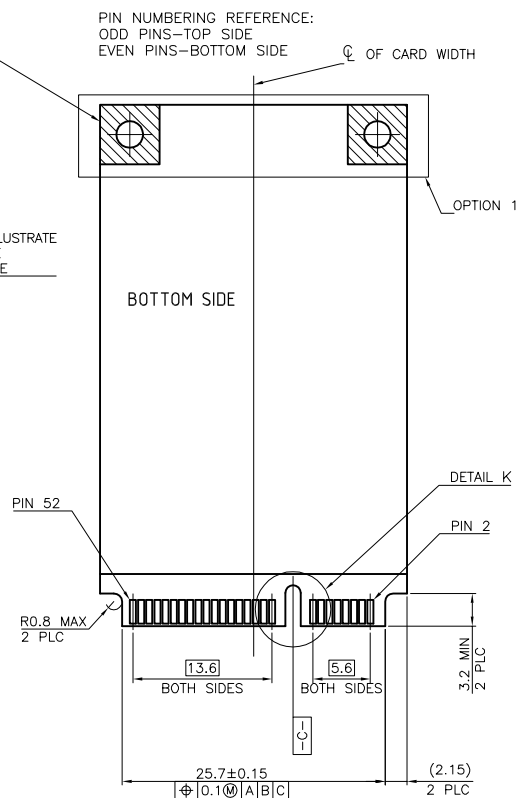
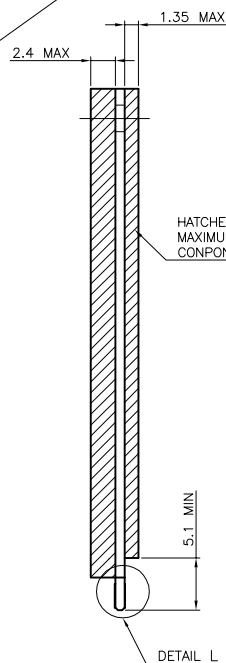


**EJECT HEIGHT
FOR FULL CARD**

mat'l. code	surface	tolerance	projection	product family
-	-	ASME_Y14.5	MM	PCI_EXPRESS
ltr	ecn no	dr	date	title
				MINI_PCI_EXPRESS
				5.6MM_HEIGHT
				dwg no
				10150900
				sheet 3 of 5
				size
				A4
				type
				CUSTOMER Drawing
sheet	revision	A		
index	sheet			



COMPONENT AND ROUTING (ALL LAYERS)
KEEP OUT AREA FOR HOLD DOWN SOLUTIONS



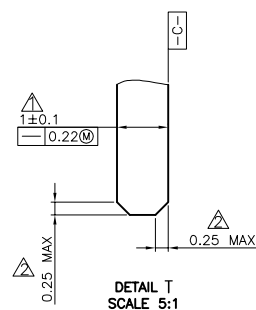
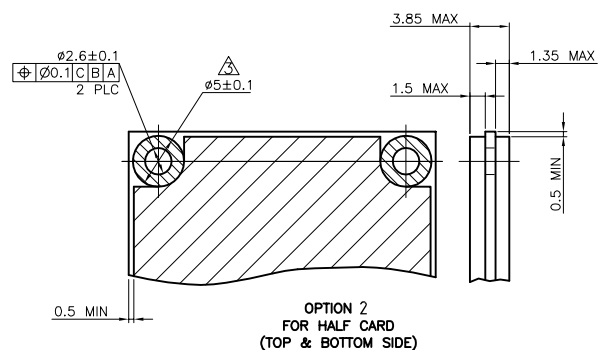
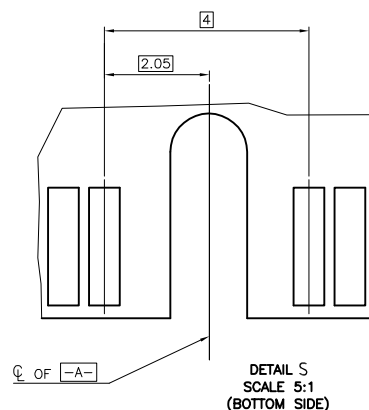
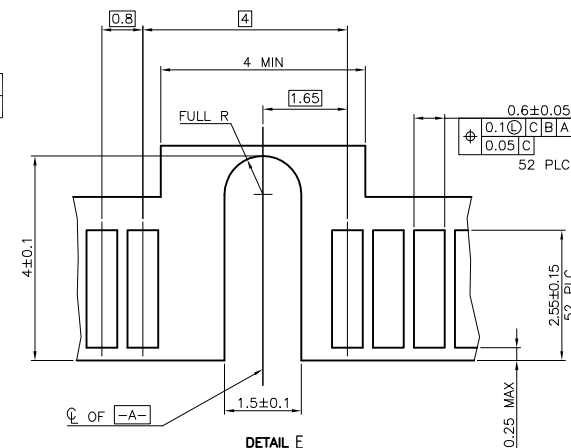
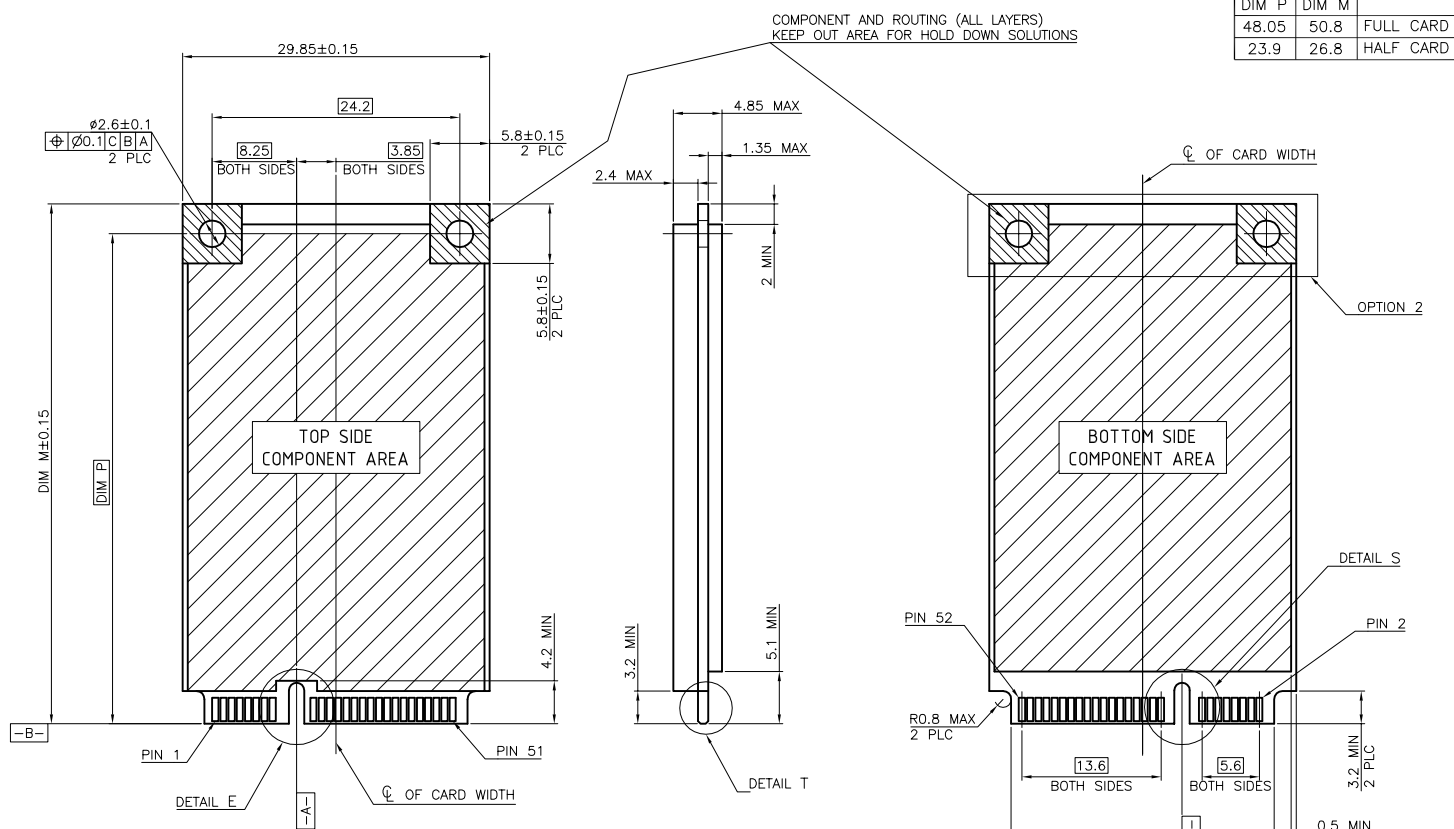
NOTES:

△ CARD THICKNESS APPLIES ACROSS TABS AND INCLUDES
PLATING AND/OR METALLIZATION.

△ EDGE BEVEL MUST BE PRESENT AND FREE OF CUTTING
BURRS FROM PCB AND CONTACT MATERIALS.

FOR PCI EXPRESS MINI CARD

mat'l. code	-	surface	✓ ASME_Y14.5	tolerance	ASME_Y14.5	projection	product family	PCI_EXPRESS
lfr	ecn no	dr	date	tolerances unless otherwise specified			title	
				angles	Line 1: .02±0.30	MM	MINI_PCI_EXPRESS	
				±2'	.00±0.20		5.6MM_HEIGHT	
					.000±0.10	scale N/A		
		dr	WINSTON_ZHU	2020-05-12			dwg no	sheet 4 of 5 size
		engr	ZHENHUA_LIU	2020-05-12			10150900	A4
		chr						
		appd	HEAVEN_CEN	2020-05-12			type	CUSTOMER Drawing
sheet index	revision sheet	A						



FOR mSATA

[illegible]