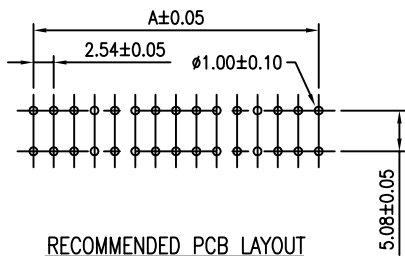
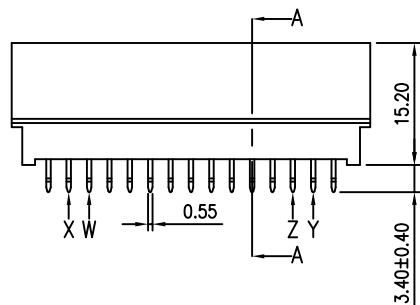
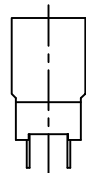
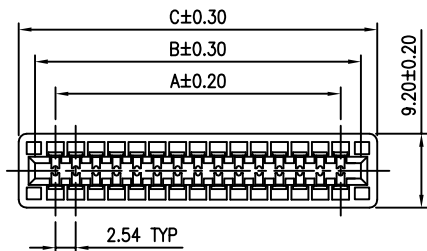


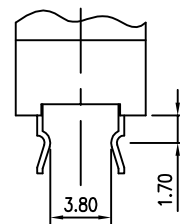
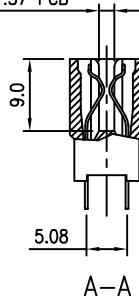
PBT



RECOMMENDED PCB LAYOUT

MATERIAL  
 HOUSING: HIGH TEMPERATURE THERMOPLASTIC, UL94V-0  
 COLOR: BLACK.  
 CONTACT: COPPER ALLOY.  
 FINISH: SELECTIVE GOLD PLATING ON CONTACT AREA  
 100u" MIN. TIN PLATING ON SOLDER TAILS  
 50u" MIN. NICKEL UNDERPLATED OVERALL.

ACCEPTED 1.57 PCB



DETAIL OF KINKED

PART NO.

SERIES NO. SA XX X L XX D TAIL TYPE  
 SA: SLOT 180° D: NO KINK  
 NO. OF PINS NO. OF PINS 02: 2 PAIR KINKS  
 MATERIAL MATERIAL 04: 4 PAIR KINKS  
 B: BRASS+ PBT CONTACT AREA PLATING  
 P: PHOSPHOR BRONZE+ PBT 01: 1u" GOLD  
 SOLDER AREA PLATING 30: 30u" GOLD  
 G: 1U" GOLD  
 L: LEAD FREE, BRIGHT

NO OF POS	DIM A	DIM B	DIM C	KINKED	NO OF POS	DIM A	DIM B	DIM C	KINKED
2X3=6	5.08	10.16	14.22	---	2X26=52	63.50	68.58	72.64	XY
2X4=8	7.62	12.70	16.76	---	2X27=54	66.04	71.12	75.18	XY
2X5=10	10.16	15.24	19.30	---	2X28=56	68.58	73.66	77.72	XY
2X6=12	12.70	17.78	21.84	---	2X29=58	71.12	76.20	80.26	XY
2X7=14	15.24	20.32	24.38	---	2X30=60	73.66	78.74	82.80	XY
2X8=16	17.78	22.86	26.92	---	2X31=62	76.20	81.28	85.34	WZ
2X9=18	20.32	25.40	29.46	XY	2X32=64	78.74	83.82	87.88	WXYZ
2X10=20	22.86	27.94	32.00	XY	2X33=66	81.28	86.36	90.42	WXYZ
2X11=22	25.40	30.48	34.54	XY	2X34=68	83.82	88.90	92.96	WXYZ
2X12=24	27.94	33.02	37.08	XY	2X35=70	86.36	91.44	95.50	WXYZ
2X13=26	30.48	35.56	39.62	WXYZ	2X36=72	88.90	93.98	98.04	WXYZ
2X14=28	33.02	38.10	42.16	XY	2X37=74	91.44	96.52	100.58	WXYZ
2X15=30	35.56	40.64	44.70	XY	2X38=76	93.98	99.06	103.12	WXYZ
2X16=32	38.10	43.18	47.24	XY	2X39=78	96.52	101.60	105.66	WXYZ
2X17=34	40.64	45.72	49.78	XY	2X40=80	99.06	104.14	108.20	WXYZ
2X18=36	43.18	48.26	52.32	WXYZ	2X41=82	101.60	106.68	110.74	WXYZ
2X19=38	45.72	50.80	54.86	XY	2X42=84	104.14	109.22	113.28	WXYZ
2X20=40	48.26	53.34	57.40	XY	2X43=86	106.68	111.76	115.82	WXYZ
2X21=42	50.80	55.88	59.94	XY	2X44=88	109.22	114.30	118.36	WXYZ
2X22=44	53.34	58.42	62.48	XY	2X45=90	111.76	116.84	120.90	WXYZ
2X23=46	55.88	60.96	65.02	XY	2X46=92	114.30	119.38	123.44	WXYZ
2X24=48	58.42	63.50	67.56	XY	2X47=94	116.84	121.92	125.98	WXYZ
2X25=50	60.96	66.04	70.10	XY	2X48=96	119.38	124.46	128.52	WXYZ

TOLERANCE	
LINEAR	ANGLES
X.±0.40	X'±
.X±0.30	.X'±
.XX±0.20	.XX'±
.XXX±0.10	.XXX'±

**UMax** 东莞市友贸实业有限公司  
**conn** DONGGUAN UMAXCONN ENTERPRISE LIMITED

TITLE: CARDEDGE SLOT, 2.54mm PITCH

PART NO. SAXXXLXXD

DWG NO. SA00007001

APPD: Jason MAT'L:  
 CHKD: Schumi FINISH:  
 DRWN: Milji Q'TY:

UNITS	SCALE	SHEET	REV
	MM	1 : 1	1 OF 1 A