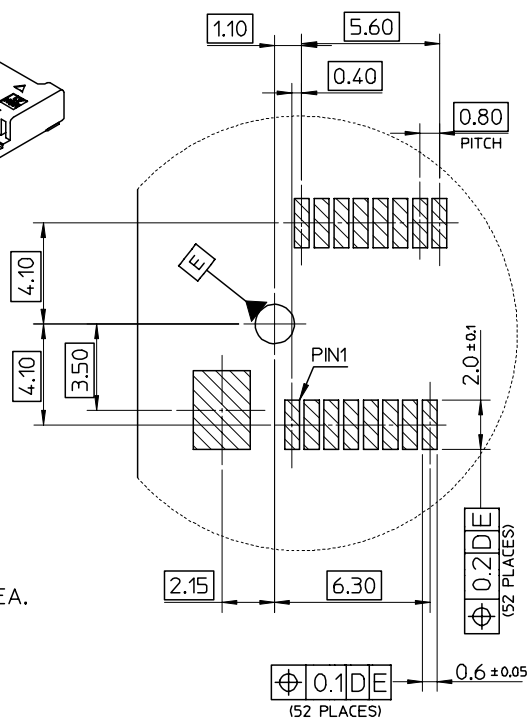


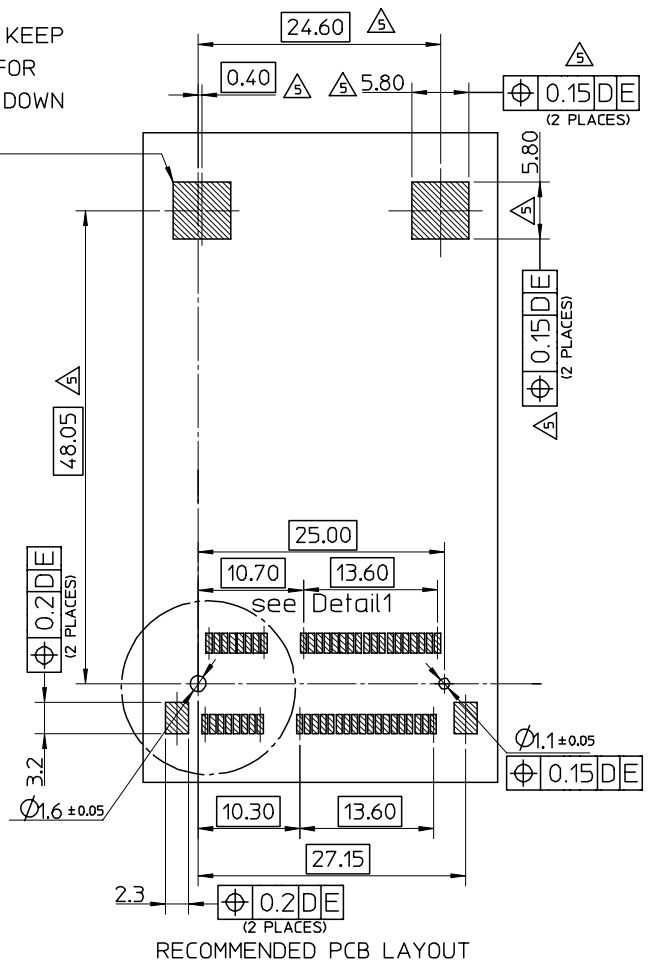
NOTES:

- MATERIALS:
HOUSING:LCP,COLOR:BLACK, UL94V-0.
CONTACT: PHOSPHOR BRONZE NAIL:BRASS
- FINISH
CONTACT:SELECTIVE GOLD IN CONTACT AND SOLDER AREA.
UNDERPLATED:NICKEL OVERALL
NAIL:TIN IN SOLDER AREA.
UNDERPLATED:NICKEL OVERALL.
- THE MODULE CARD REFERENCE MINI PCI EXPRESS CARD
ELECTROMECHANICAL SPECIFICATION.
- DATUM D IS THE TOP SURFACE OF PCB.
- IF THE CONNECTOR USED WITH 48099-00**,LATCH SIDE
RECOMMENDED PCB LAYOUT REFERS TO SD-48099-0**.
- PART 67910**** COMPLIANT TO ROHS DIRECTIVE 2002/95/EC
AND ELV DIRECTIVE 2000/53/EC.



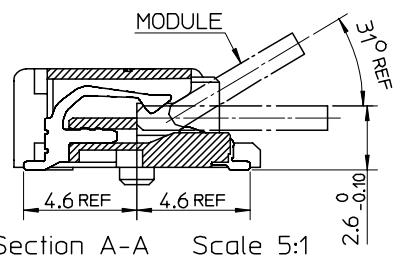
Detail1
Scale 5:1

COMPONENT KEEP
OUT AREA FOR
CARD HOLD DOWN
SOLUTION



RECOMMENDED PCB LAYOUT

679100002	10 MICROINCH GOLD
679101002	GOLD FLASH



Section A-A Scale 5:1

<p>RELEASED EC NO: SH2007-0020 2006/08/02 DRWN:DHU 2006/08/02 CHKD:HARVEY 2006/08/02 APPR: INCHEM 2006/08/09</p>	<p>DESCRIPTION</p>	<p>QUALITY SYMBOLS</p> <p>▽=0 △=0</p>	<p>GENERAL TOLERANCES (UNLESS SPECIFIED)</p> <table border="1"> <thead> <tr> <th></th> <th>mm</th> <th>INCH</th> </tr> </thead> <tbody> <tr> <td>4 PLACES</td> <td>± ---</td> <td>± ---</td> </tr> <tr> <td>3 PLACES</td> <td>± ---</td> <td>± ---</td> </tr> <tr> <td>2 PLACES</td> <td>± 0.25</td> <td>± ---</td> </tr> <tr> <td>1 PLACE</td> <td>± 0.25</td> <td>± ---</td> </tr> </tbody> </table> <p>ANGULAR ± 3°</p>		mm	INCH	4 PLACES	± ---	± ---	3 PLACES	± ---	± ---	2 PLACES	± 0.25	± ---	1 PLACE	± 0.25	± ---	<p>DIMENSION STYLE</p> <p>MM ONLY</p>	<p>SCALE</p> <p>2:1</p>	<p>DESIGN UNITS</p> <p>METRIC</p>	<p>THIRD ANGLE PROJECTION</p>
			mm	INCH																		
		4 PLACES	± ---	± ---																		
		3 PLACES	± ---	± ---																		
2 PLACES	± 0.25	± ---																				
1 PLACE	± 0.25	± ---																				
<p>DRAFT WHERE APPLICABLE MUST REMAIN WITHIN DIMENSIONS</p>	<p>DRAWN BY</p> <p>J. CHIANG</p> <p>DATE</p> <p>2003/02/25</p>	<p>TITLE</p> <p>MINI PCI EXPRESS CONN. 0.8 MM PITCH 52CIRCUIT 4.0MM H</p>																				
<p>SEE TABLE</p>	<p>CHECKED BY</p> <p>C. WILSON</p> <p>DATE</p> <p>2003/03/06</p>	<p>APPROVED BY</p> <p>L. ERICK</p> <p>DATE</p> <p>2003/03/06</p>																				
<p>SIZE</p> <p>A3</p>	<p>MATERIAL NO.</p>	<p>DOCUMENT NO.</p> <p>SD-67910-001</p>																				

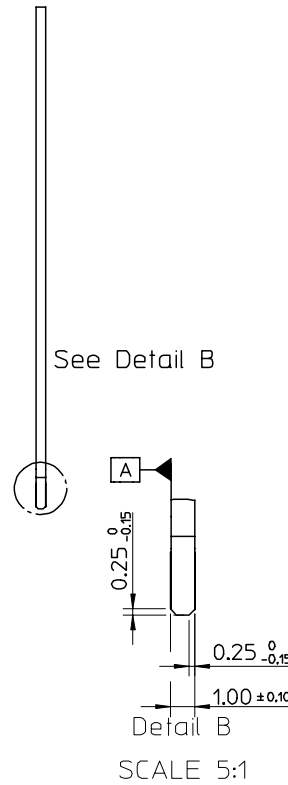
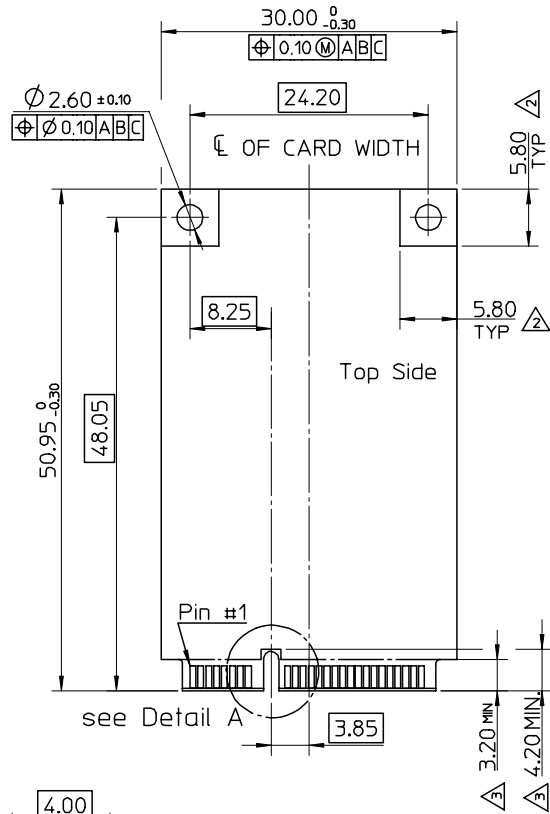
10 9 8 7 6 5 4 3 2 1

NOTES;

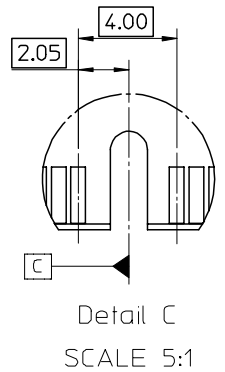
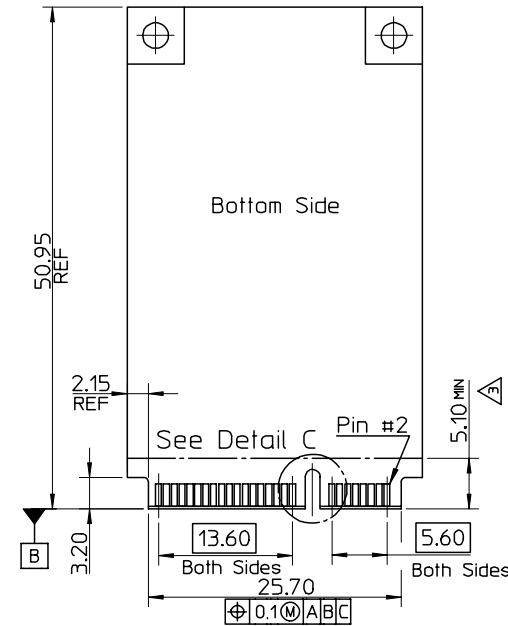
1. PIN NUMBERING REFERENCE:

ODD PINS - TOP SIDE
EVEN PINS - BOTTOM SIDE

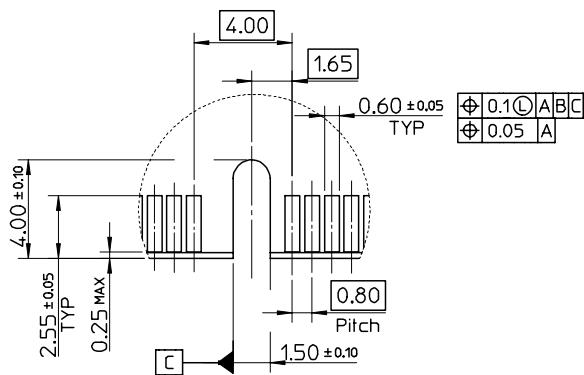
- △ COMPONENT AND ROUTING (ALL LAYERS)
KEEP OUT AREA FOR HOLD DOWN SOLUTIONS.
- △ COMPONENT KEEP OUT AREA FOR CONNECTOR.



Detail B
SCALE 5:1



Detail C
SCALE 5:1



Detail A
Scale 5:1

RELEASED EC NO: SH2007-0020 2006/08/02 DRWN:DHU CHKD:HARVEY 2006/08/02 APPR: JNCHEM 2006/08/09	DESCRIPTION	QUALITY SYMBOLS	GENERAL TOLERANCES (UNLESS SPECIFIED)	DIMENSION STYLE	SCALE	DESIGN UNITS	THIRD ANGLE PROJECTION
		▽=0 △=0	mm INCH	MM ONLY	1:1	METRIC	
			4 PLACES ± --- ± ---	DRAWN BY	DATE	TITLE	
			3 PLACES ± --- ± ---	J. CHIANG	2003/02/25	MINI PCI EXPRESS CONN. 0.8 MM PITCH 52CIRCUIT 4.0MM H	
			2 PLACES ± 0.25 ± ---	CHECKED BY	DATE	MOLEX INCORPORATED	
			1 PLACE ± 0.25 ± ---	C. WILSON	2003/03/06	MOLEX INCORPORATED	
			ANGULAR ± 3 °	APPROVED BY	DATE	MOLEX INCORPORATED	
				L. ERICK	2003/03/06	MOLEX INCORPORATED	
				MATERIAL NO.	DOCUMENT NO.	SHEET NO.	
			DRAFT WHERE APPLICABLE MUST REMAIN WITHIN DIMENSIONS	SEE TABLE	SD-67910-001	2 OF 2	
				SIZE	THIS DRAWING CONTAINS INFORMATION THAT IS PROPRIETARY TO MOLEX INCORPORATED AND SHOULD NOT BE USED WITHOUT WRITTEN PERMISSION		
				A3			

9 8 7 6 5 4 3 2 1